



GARBALLY COLLEGE

Coláiste Naomh Sheosaimh

Gearrbhaile



School Prospectus

Mr Paul Walsh - Principal

Ms Collette Quinn - Deputy Principal



The Arch



Our Patron St. Joseph



Our School Library

WELCOME TO OUR SCHOOL

Garbally College is a voluntary Catholic School under the trusteeship of the Diocese of Clonfert.

Founded in 1892, it has a long and proud tradition as a seminary, boarding and day boys' school.

In partnership with families and the wider community we strive to create a learning community that actively encourages excellence in teaching and learning.

We strive to create a positive, orderly and caring environment, which will nurture the talents of all in our school community.

We encourage our students to become knowledgeable, well-behaved and open minded individuals who can face the world of work and further education with confidence and competence.

We endeavour to ensure that each student passing through our college will be enabled to develop positive and responsible attitudes towards themselves and others.



Principal Mr Paul Walsh and Deputy Principal Ms Collette Quinn

OUR MISSION

Our school ethos is based on the conviction that living the Gospel values of love, freedom and justice enable all members of the school community to reach that fullness of life that Jesus promised:

"I HAVE COME THAT YOU MAY HAVE LIFE AND HAVE IT TO THE FULL" (JN 10:10)



Concert Hall

A CARING SCHOOL... A POSITIVE ENVIRONMENT

Good order is crucial to successful teaching and learning. Our code of behaviour sets out our positive pro-active approach for all in our school community.

We operate a strict anti-bullying policy and care is taken to ensure that all our students feel welcomed, cared for and safe during their time in Garbally.

A core stand of our educational philosophy is to ensure that students enhance their self-esteem and confidence both in the classroom and through their participation in our many extra curricular activities.

Our awards ceremonies on St. Joseph's day and on Graduation night encourage all to achieve their potential in a variety of ways, academic, pastoral and communal.

We particularly strive to raise awareness of peace and justice issues both locally and through our involvement with voluntary organisations, and internationally by our commitment to Trocaire.

Our Pastoral Care Team comprising, The Principal, Deputy Principal, Year Head, Chaplain and Counsellors meet regularly to ensure that issues of concern are dealt with immediately and sensitively and that the personal and academic needs of our students are responded to in a professional manner.



Bishop Michael and Roisin McSharry



The Gifts

EXCELLENT EDUCATIONAL PROVISION

Garbally College is a dayboy's school for Ballinasloe and the surrounding parishes. The school has been extensively renovated and modernised over the past number of years. All our teacher-based classrooms have the most up to date I.C.T. facilities and furnishings. Our newly upgraded Dining Hall serves healthy nutritious food at a reasonable price. We place particular emphasis on literacy and numeracy and our state of the art library is fully equipped with laptops and a very extensive responding of modern teenage fiction.

All year groups have their own designated areas to relax and gather in. Our supervised lunch time clubs and extra curricular provision after school every evening of the week puts our college to the fore of student welfare in this country. We also have a state of the art sports complex, gym, handball alleys and games facilities.



Autism Unit.

ASSESSMENT

- We have adopted the Assessment for Learning (AFL) approach to formative assessment. Its purpose is to use the whole process of assessment to help learners improve their learning. It is about "learning to learn".
- Summative Assessment refers to the assessment of learning and aims to provide a summary of the achievements of the learner. End of Term Assessment reports for all learners are sent home via VSWare.
- The CAT4 Test is administered for all incoming first year students. This test gives an indication of the strengths of the incoming students in the areas of verbal and numerical reasoning.



New classrooms with all modern I.C.T. facilities.

EXCELLENT EDUCATIONAL PROVISION

Study is the cornerstone of success in examinations. We provide:

- Supervised evening study.
- Saturday morning study.
- Mid term and holiday study.



Supervised Study



Pedestrianised Courtyard to relax and meet in.

CURRICULUM

Our carefully chosen curriculum offers breadth and balance across a range of programmes and subjects.

Humanities

Local, national and international issues are a focus of these dynamic departments. Our students artistic and musical talents are also fostered.

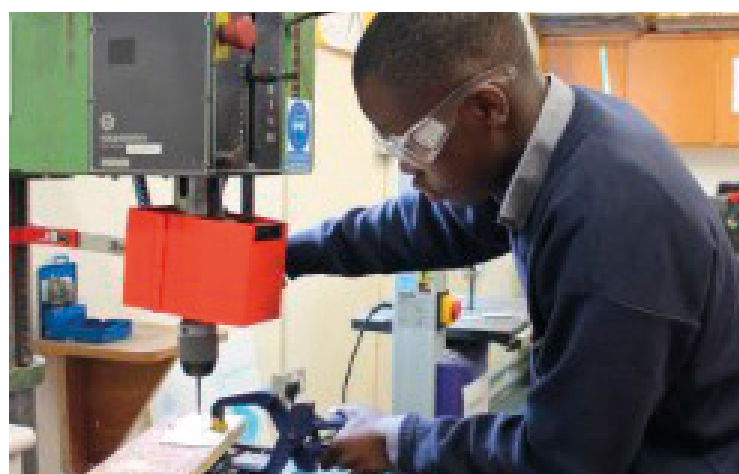
- HISTORY
- GEOGRAPHY
- C.S.P.E.
- S.P.H.E.
- ART
- MUSIC



Woodwork



Art



Engineering



Home Economics

Business

Successful careers in Accountancy and Marketing owe their origins to a thorough grounding in all business subjects.

- BUSINESS STUDIES
- ACCOUNTANCY
- BUSINESS
- ECONOMICS

Technological Based Subjects

These subjects transcended the barriers of language and incorporate design and computer-aided manufacture.

- GRAPHICS
- DESIGN & COMMUNICATIONS GRAPHICS
- WOOD TECHNOLOGY
- ENGINEERING
- CONSTRUCTION STUDIES

Science

Students are offered the widest possible choice in the Science area with fully up to date resources in three modern well-equipped laboratories.

- SCIENCE
- PHYSICS
- CHEMISTRY
- BIOLOGY
- AGRICULTURAL SCIENCE
- HOME ECONOMICS

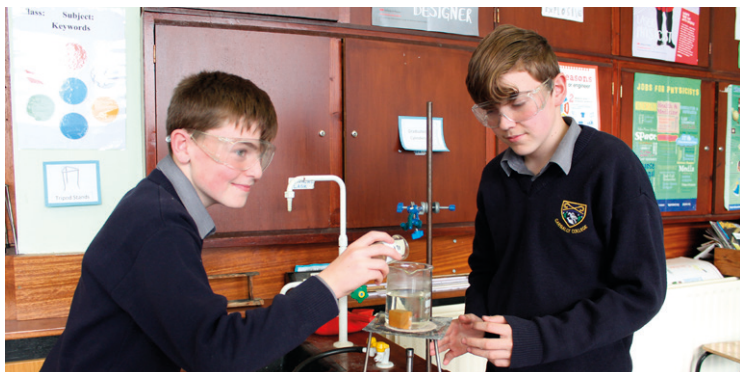
Information Communication Technology

The college is to the forefront in I.T. Provision

- TWO ULTRA MODERN I.T. SUITES
- NETWORKED COMPUTERS IN EACH CLASSROOM
- INTERACTIVE WHITEBOARDS
- DATA PROJECTORS
- SUITE OF LAPTOPS IN THE LIBRARY
- BROADBAND ACCESS IN EACH CLASSROOM



Metal Work



Science



Bodhran Making



Language Day



Godfrey Gibbons

Religious Education

The R.E. programme caters for the spiritual, moral, personal and social development of each pupil, complemented by a practical involvement in community activities.

The college also has the services of Chaplaincy and Pastoral Care Teams to look after the pastoral needs of all in the school community. Each year group attends an annual retreat to provide students with the opportunity to reflect on the values they hold important in their lives and on their relationship with God, themselves and others.

Languages

Our up-to-date facilities and methodologies enable our students to study all languages to the highest level.

- GAEILGE
- ENGLISH
- FRENCH
- GERMAN

Physical Education

Our well equipped gymnasium, the extensive playing facilities available to our students and the varied P.E. curriculum help our students to develop skills and interest for life.

L.C.V.P.

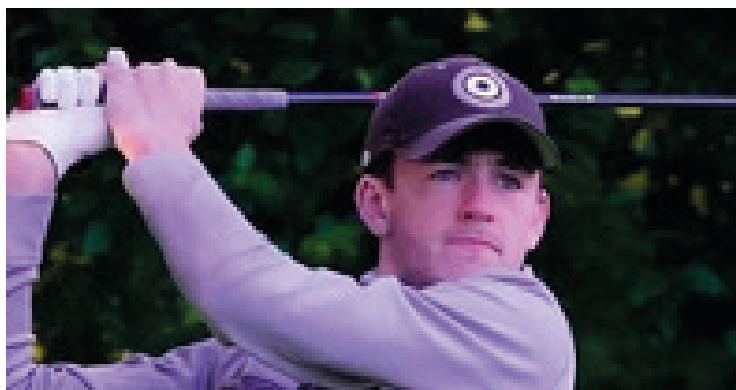
This innovative programme offers students work experience and enhances their prospects for further studies.

Guidance Counselling

Here the students abilities and aptitudes are tested, thereby ensuring the correct choice of subjects and career options. In addition the Guidance Counsellor works with the students on an individual basis.

Transition Year

The college was one of the first in the country to offer this programme. The high status the programme now occupies is reflected in the demand for places, the diversity of the curriculum and the positive comments by the inspectorate during our whole school evaluation.



Tom Cafferky

CO-CURRICULAR

Our co-curricular programme enables our students to become aware of social and economic issues beyond the school gate and develop practical skills to enhance their academic studies.

- Young Scientist Exhibition
- Green School Initiative
- Educational Field Trips
- School Tours
- Work Shadowing
- Social Awareness
- College Choir
- Enterprise Education
- Cultural Activities
- Public Speaking
- Speech & Drama
- Healthy Eating Options



Pumpkin Winter



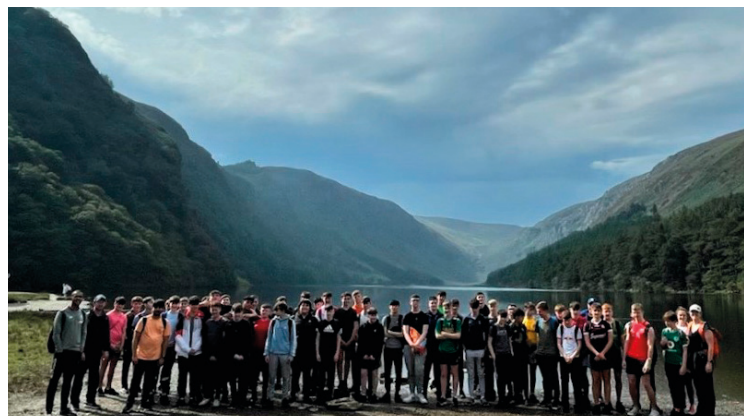
Trip to Italy



Debating



Fundraiser



Glendalough

ARAS AGUS SEOMRA NA MBUACHAILLI

Aras and Seomra na mBuachailli caters for 2 ASD classes (6 students per class), and 1 class for students with moderate general learning difficulties (8 students).

Facilities

There are 2 state of the art buildings used for Aras and Seomra na mBuachailli. Between them they contain 3 classrooms, toilets, relaxation room and fully fitted kitchen. Students interact with each other in class and with the other groups during break, lunchtime, swimming and cooking allowing friendships to develop.

Timetabling

The aim of the learning programmes followed in the class are to make students as independent as possible so that they are active participants in our society. There are 2 main programmes L1LP and L2LP.



L1LP: comprises of the following Priority Learning units

- Communication, language and literacy
- Numeracy
- Personal Care and Wellbeing
- Being part of a community
- The arts
- Physical education

L2LP: comprises of the following PLU's and a number of short courses

- Communicating and Literacy: broken into listening and speaking, writing, computers, non - verbal communication, reading
- Numeracy: managing money, awareness of money, awareness of temperature, awareness of weight and capacity, awareness of length and distance, spatial awareness, using data for a range of different purposes, awareness of time and using shapes
- Personal Care: Recognising emotions, awareness of one's sexuality, Stress management, making decisions, health and safety, develop healthy eating habits, developing good daily personal care practices and developing a healthy lifestyle.
- Living in a community: making consumer choices, seeking help and advice, using local facilities, resolving conflict and developing good relationships.
- Preparation for work: Set goals for learning, finding out about work, preparing for a work related activity, developing an awareness of health and safety using equipment, taking part in a work related activity.



Short Courses: CSI, Caring for animals, SPHE, PE to name but a few of which students need to complete 2.

The modules are all completed on a continuous assessment basis. This allows a variety of assessment techniques to be used including worksheets, photographs and recordings. It allows all students the best opportunity to achieve the objectives using practical methods and a lot of educating through



The learning programme followed in the class allows for a lot of learning to take place in society. The class incorporates field trips to a variety of places e.g. cinema, shopping, fire station, restaurant etc. On top of this we have visits from guards and other experts in their field of work where the students conduct interviews. Students also get the opportunity to visit a place in society where they express an interest in working. All outings are organised by the students in the class.

Inclusion

This learning programme allows for integration with mainstream students. As a class we partake in reverse integration where we have students from mainstream partake in classes with our students. This is primarily done with TY students. This allows peer learning to take place for all involved and takes place in subjects such as cooking and swimming. Students partake in all school events such as St. Joseph's Day.

Integration with society



Special Needs Assistants/ Teachers

SNAs are assigned to the class group as opposed to a particular individual student. They assist in the classroom with maintaining student focus on the task being done. If a student is going into mainstream classes and if it is deemed necessary, an SNA will attend with them.

The overall aim of the programme is to ensure the student reach their full potential in a fun and interactive environment.



PARTNERSHIP

Parents

Parents are crucial to the success of our college. Garbally Parents Association meets regularly and plays an active role in our school community.

Parents participate in all policy committees, are welcome to discuss their sons welfare at all times and ensure that the college facilities are resourced and maintained to the highest standards.

Mentors

Mentors are senior students chosen for their leadership qualities, who help first year students make the transition to secondary education.



Board of Governors

The Board of Governors under the chairmanship of Bishop Michael Duignan holds ultimate responsibility for the ethos and future direction of the college.

The Board administers the Madden Endowment which continues the generous resourcing of the College facilities since its foundation in 1892.

Bishop Michael Duignan



Board of Management

The Board of Management has responsibility for the management of the school. It is composed of parents, teachers and trustee representatives. Fr. Colm Allman is Chairman of the Board and President of the College.

Teachers

Successful schools have teachers who have professional, committed and caring. Together with pupils and parents they form a crucial part of the partnership triangle. Teachers are consulted on all policy issues and our middle management team meets regularly.

Student Council

Garbally College offers students the opportunity to join the Students Council. The Council is a democratic body composed of and run by the students themselves. Each class elects a representative to the Council to express the students' views on the running of the school, school policies and the general areas of interest and concern.

EXTENSIVE FACILITIES

GARBALLY COLLEGE occupies one of the most spectacular settings in Ireland.

The centrepiece is undoubtedly Clancarty House, which faces onto an extensive landscaped parkland, which is now used for the college's sporting facilities.

All in our school community appreciates the privilege of working and being educated in this historic and beautiful environment.



Dancing



Musical

AS WELL AS OUR TEACHER BASED CLASSROOMS OUR FACILITIES INCLUDE...

- Subject-Based Rooms
- Physics Laboratory
- Chemistry Laboratory
- Junior Science Laboratory
- Agricultural Science Laboratory
- Gymnasium
- Library
- Two Computer Rooms (full equipped, networked broadband access)
- Prayer Room
- Playing Fields
- Technical Drawing rooms (suite of computers with networked broadband access)
- Engineering Room
- Construction Studies Room
- Two Woodwork Rooms
- Guidance & Counselling Room
- Art Room
- Dining Hall
- Meeting Room
- Professional Development Room
- Sports Complex
- Assembly Hall
- Autism Sensory Garden
- Nature Walk
- Autism Education Centre
- Home Economics Room
- Two Engineering Rooms
- Two Wood Technology Rooms
- Two Home Economics Rooms



New Computer Room



Driver Ed



Outdoor Facilities



Outdoor Facilities



Fundraiser

SPORT IS AT THE CENTRE OF OUR PROVISION AND ETHOS

- RUGBY
- ATHLETICS
- SOCCER
- BASKETBALL
- HURLING
- GAELIC FOOTBALL
- HIKING CLUB



Junior Football 2022



Senior Football 2022



Golf Team

EXTRA CURRICULAR

Our extensive facilities enable our students develop fully in mind, body and spirit during this crucial period of their personal growth and development.

To achieve this Garbally College encourages all our students to take part in the various sporting and cultural activities offered by the school especially Rugby, Gaelic Football, Hurling, Athletics, Soccer, Indoor Hockey, Volleyball, Basketball and Table Tennis. A particular feature of our extra curricular provision is our pre-school, during school and after school clubs.



Junior Rugby 2022



Senior Rugby 2022



First Year Football

LUNCHTIME CLUBS

- Table Tennis
- Racket Ball
- Squash
- Music
- Indoor Soccer
- Basketball
- Tennis
- Handball
- Language Tuition
- Homework Club
- Computer Club
- Book Club
- Debating
- Speech & Language



**A MOST EXQUISITE NATURAL SETTING
FOR OUR STUDENTS TO ENJOY
THEIR SECONDARY EDUCATION IN.**





GARBALLY COLLEGE

Coláiste Naomh Sheosaimh
Gearrbhaile

Phone: 090 9642504 **Fax:** 090 9644128

Email: garbally.college@gmail.com **Website:** www.garbally.ie